

mädchenfürallesblog

I LOVE HANDMADE - AUS LIEBE ZUR HANDARBEIT

EBOOK SHOPPER

ENGLISH

CM

# mädchenfürallesblog

I LOVE HANDMADE - AUS LIEBE ZUR HANDARBEIT



EBOOK SHOPPER

## CONTENT

Material and Cutting.....	3
Constructing Bag Body.....	4
Attaching Bag Bottom.....	5
Make Handles and Facing.....	6
Attaching Handles and Facing.....	7
Reinforce Handles and Facing.....	8

Questions and suggestions?  
[howdy@mädchenfürallesblog.de](mailto:howdy@mädchenfürallesblog.de)





# mädchenfürallesblog

I LOVE HANDMADE - AUS LIEBE ZUR HANDARBEIT

## MATERIAL AND TOOLS

- Fabric for bag
- Fabric for facing
- Seat belt webbing for handles
- Matching thread
- Sewing machine, pins etc.

## CALCULATING FABRIC AMOUNT AND CUTTING

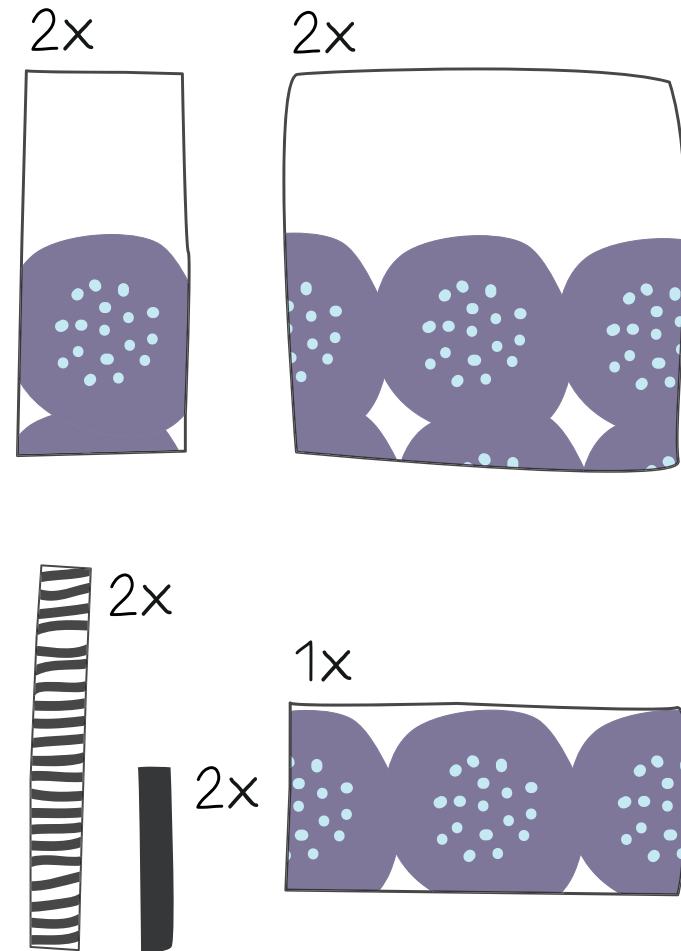
To get a rough idea of dimension, it helps to picture a regular paper shopping bag. (In Germany they come with the following measurements - height ca.: 40 cm/width: 30 cm/depth: 17 cm). Now you can decide what you want to change - add height, make side panels less wide, add width to the front panel.

These are the measurements I used for my shopper:

- Side panel - 12 cm x 40 cm (cut 2)
- Front/back panel - 35 cm x 40 cm (cut 2)
- Bottom - 35 cm x 12 cm (cut 1)
- Facing - 47 cm (width front panel + 2x half the width of side panel) x ca. 10 cm (cut 2 - resp. cut 1 on fold)

Add 1 - 2 cm sewing allowance to each edge and neaten edges with zig zag stitch.

- Handles - ca. 40 cm in length



# mädchenfürallesblog

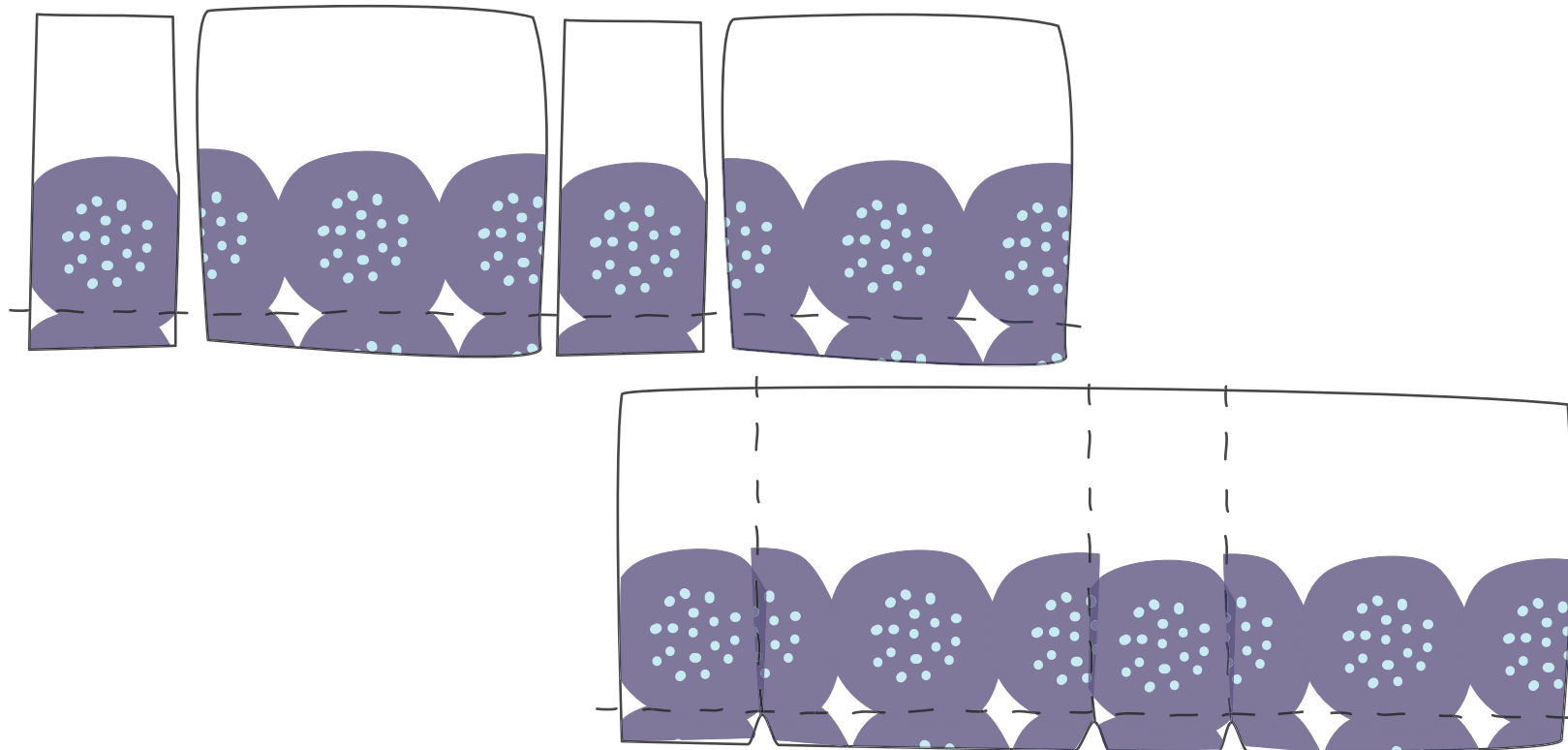
I LOVE HANDMADE - AUS LIEBE ZUR HANDARBEIT

## CONSTRUCTING BAG BODY

Align all parts of the bag's body as pictured below (alternating one narrow and one wide piece).

Pin side seams right side to right side as indicated by the seamline you marked before. To attach the bag

bottom you'll need to leave a gap the length of the sewing allowance at the bottom end of each seam (see *dashed line*). It helps to mark where to stop sewing with a pin during pinning.



# mädchenfürallesblog

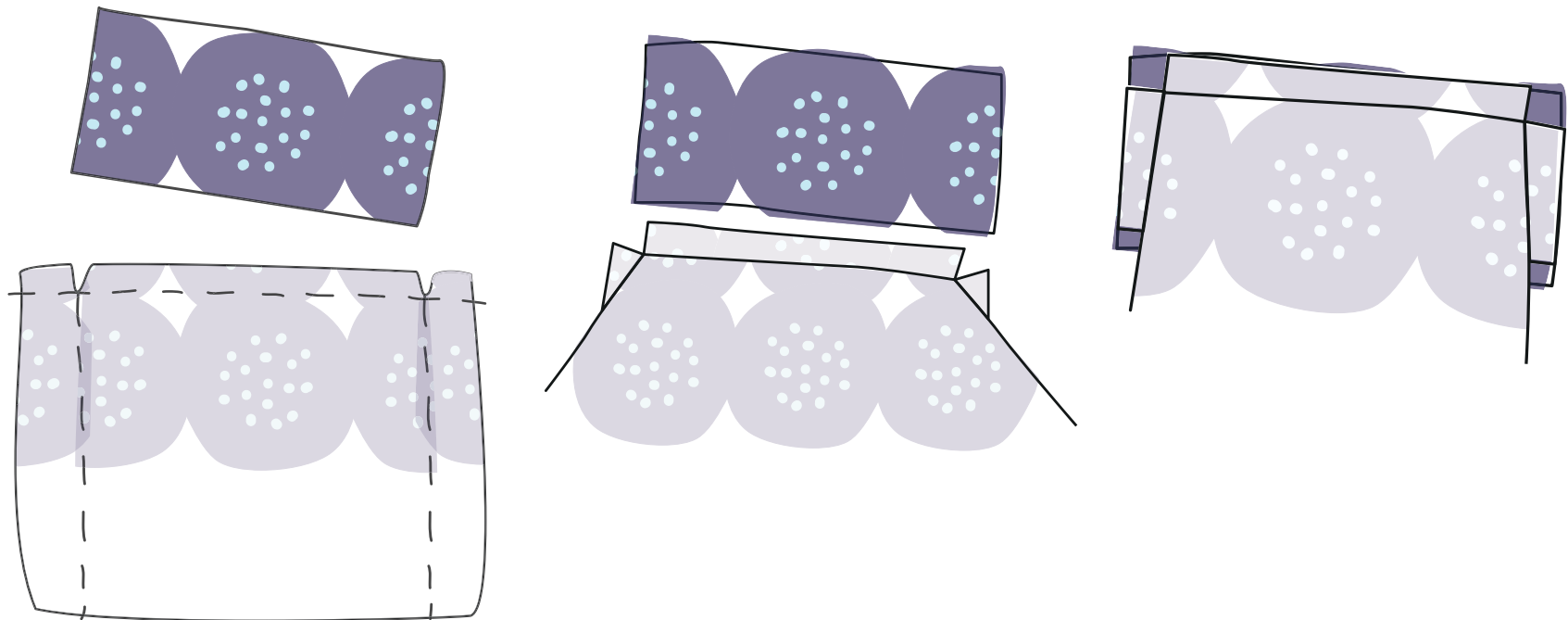
I LOVE HANDMADE - AUS LIEBE ZUR HANDARBEIT

## ATTACHING BAG BOTTOM

After sewing all four seams of the bag's body, turn the resulting tube inside out, so that the wrong side is now on the outside.

Align edges of bottom piece with the overlapping seam allowance of the body and pin right side to right side. There should be a square-shaped gap left

open in all four corners of the bottom piece. Sew along seam line. Trim corners close to the seam. Turn bag right side out. You can use some kind of blunt point to help forming a sharp corner when turning them out (*i.e. a pencil*). Give all edges a good press.



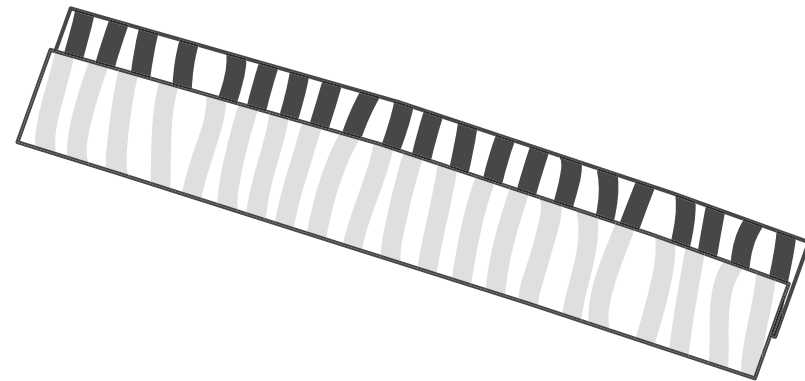
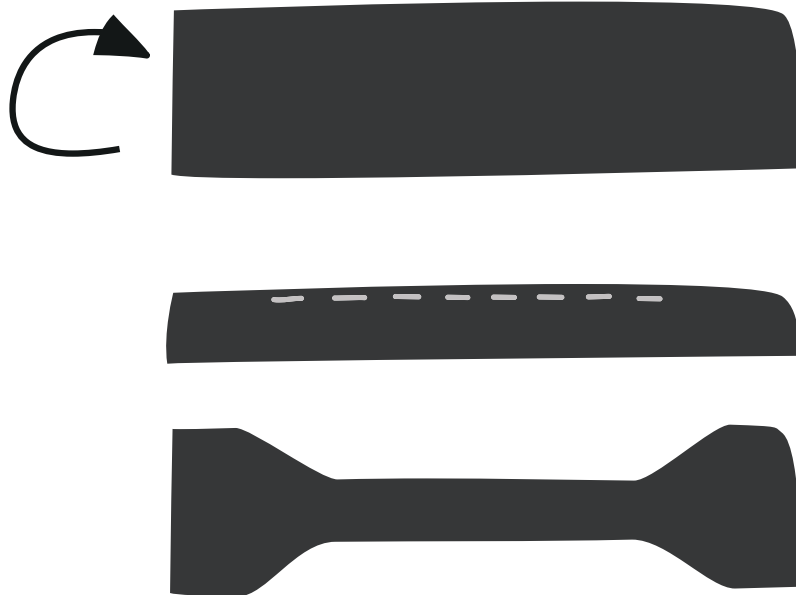
# mädchenfürallesblog

I LOVE HANDMADE - AUS LIEBE ZUR HANDARBEIT

## MAKE HANDLES

To make the handles, fold seat belt webbing in half lengthwise. Secure with pins or safety pins.

Measure ca. 8 - 10 cm in from left and right edge and ca. 1 - 2 cm from top edge. Secure with straight stitch. *(If this is your first time sewing with seat belt webbing, I recommend testing your thread tension etc. on a scrap piece first.)*



## PREPARE FACING

Depending on whether you cut two pieces or one piece for your facing. Pin right side to right side and close side seam(s).

*Variation:* Put in lining instead of facing. Cut all pieces a second time from lining fabric. Construct a second identical bag, but leave a gap for turning the finished bag inside out in one of the side seams. Attach lining - after placing handles - in the same manner as the facing. *(See page 7. Turn lining wrong side out. Put outer bag right side to right side inside the lining. Close top seam. This will encase all your fabric edges, which means you can skip the neatening.)* Turn out bag through the gap you left in the side seam. Give edges a good press. Sew gap shut with an invisible hand stitch.

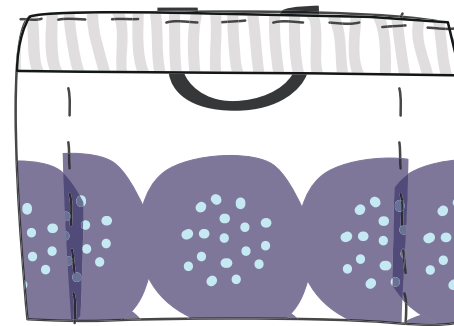
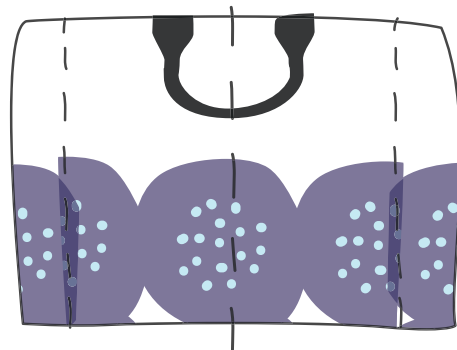
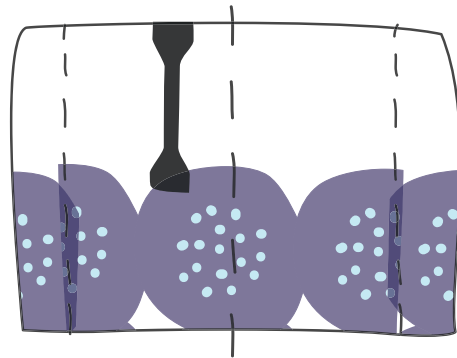
# mädchenfürallesblog

I LOVE HANDMADE - AUS LIEBE ZUR HANDARBEIT

## ATTACH HANDLES

Find a flat surface and flatten out bag. Find middle of front panel and mark with pin.

Place handles at desired distance from middle and secure with pins. The loop should be facing down at this point.



## ATTACH FACING

Turn facing inside out. Put bag inside facing and pin together along top edge right side to right side. Align side seams of facing with middle crease of the side panels. Sew along seam line.

Turn facing to the inside of the bag and flip handles up. Give top edge a good press.

# mädchenfürallesblog

I LOVE HANDMADE - AUS LIEBE ZUR HANDARBEIT



## REINFORCE HANDLES

To reinforce the handles and attach the facing to the inside of the bag, you can add a square seam just below where the handles attach to the bag. Secure fabric to the left and right of the handle with a pin. Start about 0.5 cm below top seam and sew a couple of centimeteres down. Leave needle down, lift foot and pivot. Repeat 4 times (or 8 to double up seam).



ALL DONE!



# mädchenfürallesblog

I LOVE HANDMADE - AUS LIEBE ZUR HANDARBEIT

## EBOOK SHOPPER BETA 1.1

ENGLISH VERSION, CM

(c) 2016 Barbara Rehbehn, mädchenfürallesblog.de

*All rights reserved. All pictures and illustrations are my own.  
Please don't use parts of the eBook Shopper somewhere else without my consent.*

*No liability assumed for errors and omissions.  
This beta version release constitutes a first draft and will be refined and added to over time.  
Feel free to email me with your questions or suggestions at [howdy@mädchenfürallesblog.de](mailto:howdy@mädchenfürallesblog.de)*

*If you post your shopper on your blog/social media, please link back  
to [maedchenfuerallesblog.de](http://maedchenfuerallesblog.de) and this eBook. Dankeschön, thank you ♥*

Fonts:

Lorna by Cyreal

Monteserrat by Julieta Ulanovsky

